

## SKID STEER AND COMPACT TRACK LOADER





**Introducing the new, improved JCB skid steer  
and compact track loader range**



## UNIQUE INNOVATION, SAFETY AND CONVENIENCE



Welcome to Series II – the new and improved JCB skid steer and compact track loader range, featuring high levels in operator comfort, class-leading controllability and performance. Plus, we have added an all-new, 800kg class skid steer loader – the 180W.

At JCB we are renowned for leading the way in producing revolutionary designs and with the introduction of the first JCB skid steer range in January 1993, the most convenient and safest machines of their type in the world were born.

At this time we were the only manufacturer to offer a side-entry machine design... and it's still the case today. Our unique single loader arm makes these the safest skid steer and compact track loaders for entry and exit, and ensures that the operator doesn't need to clamber over the front attachment.

Wherever you're working – on a building site, in a garden centre, landscaping, forestry or farming, to name but a few – the versatility, manoeuvrability and visibility provided by the new JCB skid steer and compact track loaders will make them absolutely invaluable.

# Performance, productivity and manoeuvrability

Wheeled and track models cope with all ground conditions,  
however arduous

Compact, manoeuvrable design allows access to even the most confined sites

Efficient Perkins and JCB Dieselmix engines offer superb power and reliability

Transmission power management system improves anti-stall capabilities

Comprehensive range of tyres maximises traction and adapts  
machines to specific tasks



When it comes to manoeuvrability, you cannot beat JCB Series II skid steers and compact track loaders. Exceptionally compact with direction changes achievable within the machine length, they all operate quickly and easily on even the most confined sites. And when poor winter weather makes ground conditions heavy going, the compact track loaders give you the stability, traction and low ground-bearing pressures you need to keep working.

Adding to your options and optimising traction even further, there is also a comprehensive range of tyres to suit any application, from standard pneumatic and extra floatation to solids, foam-filled and segmented tyres. So now you can take your JCB skid steer wherever you need it most.

Typically, skid steers and compact track loaders are called on to operate in confined spaces. JCB's unique single tower offers excellent visibility even in the tightest areas, giving the operator the confidence that he can see colleagues and obstacles whilst carrying out the task in hand.

When it comes to productivity, these machines boast the reliable performance power you need, with proven Perkins engines on the 160, 170 and 180, and the powerful, record-breaking JCB Dieselmix engine on the 190 and 1110.

There is also a host of additional features to guarantee maximum performance. For instance, an in-line boring process for the revolutionary single-arm design brings the loader arm and chassis together so the two pivots are bored as one, enabling tight tolerances to be maintained. And we have improved the hydraulics for better boom and bucket performance and greater tearout forces.

In addition, a transmission power management system is now incorporated on all machines. This improves the machines' anti-stall capabilities by reducing the pump displacement and hence engine load without fully unloading transmission pressure.









# Increased safety and a new level of operator comfort

Redesigned cab is more spacious and comfortable than ever before

Restyled joysticks let you operate attachments and auxiliary hydraulic flow  
without removing hands from the controls

New isolation bar and excellent visibility increase operator safety

Single chain case eliminates left-hand chain and makes access simple and safe

Side entry means you don't have to clamber over cumbersome attachments



Whatever the application, whatever the conditions, the operator's safety is paramount. JCB skid steers and compact track loaders are unique in that they are designed with this firmly in mind.

So we created the world-renowned single arm and side entry, which means you don't have to risk injury by climbing in through the front window over large and cumbersome attachments, as is the case with traditional skid steer and track loaders. It also means you get excellent all-round visibility. Plus, on the 160, 170 and 180 compact models, a single chain case is designed onto the right side of the machine. This eliminates the left-hand chain case making for even safer cab access via the door (now hinged from the other side to give easier access, particularly on track models) and low cab step.

You may be using your machine on some tough ground conditions, but that doesn't mean you're in for a rough ride. The new Series II models feature a restyled cab that has been designed for complete operator comfort.

First of all, much cleaner lines and plastic mouldings result in a less cluttered, more spacious interior, as well as improved shovel toe plate visibility. Moving some of the switches onto the restyled joysticks as well as improving the instrument layout, including moving the switchgear from above the operator's head, has resulted in easier to use, more operator friendly machines. And a new isolation bar adds to operator safety.

The new Series II machines also offer improved controllability, putting you in total charge. This includes a choice of three industry recognised control patterns to suit your preference.

Whichever way you look at it, these are amazingly safe, productive machines.





# A machine you can rely on

High quality, tried-and-tested components enhance reliability

High-spec naval bronze bushes extend service life of the single-arm design

Ground-level routine maintenance points are easy to access from the rear or side

All filters are grouped for easy maintenance

Unique single-arm design results in fewer grease points for quicker, easier daily maintenance



So you've got ultimate safety and convenience, superb performance and incredible comfort. But with a JCB Series II you also have a machine renowned for its reliability. That's because every single component is of the highest quality and undergoes comprehensive, continuous testing simulating the toughest conditions the machine could face.

Each model features top-specification IP67 electrics with a plug-in wiring harness fitted as standard. And to ensure maximum service life of the single-arm design, we've invested in high-specification, naval-bronze bushes, typically used for submarine prop shaft bushings.

You can also rely on JCB to make life easier (and less costly) when it comes to servicing: the single arm gives the added benefit of fewer grease points, ideal for machines going into rental departments; all routine maintenance points are easily accessible at ground level, with the filters all grouped together; full service access is available without the need to tilt the operator's cabin or raise the arm; and the transmission is positioned under the quick release operator's seat.

So now you can see why JCB Series II machines are not only safer to access and use, they are also easier to maintain than any other competitor machine available today.













## Engine/hydraulics

Class-leading high-flow performance.

37, 44.7, 63 and 68kW gross engine power models.

Efficient proportional flow for maximum attachment efficiency and excellent control.

Protected and robust hoses and auxiliary routing.

Reliability and long service intervals.

## Loader arm

Low-level loader arm.

Robust endurance-tested steel structure.

Industry standard quickhitch.

Lifetime guarantee.

Excellent breakout forces.

## Transmission

Single chain case for easy maintenance (160, 170 and 180).

Hydrostatic transmission giving zero to maximum speed forward and reverse.

Two speed models available (190, 1110).

Creep speed option for precise handling.

Power management system maximises tractive effort.

## Cab and controls

Excellent all-round visibility.

Gas-strut-assisted side access door.

ROPS and FOPS certified cab with demolition protection options.

Three control patterns available: JCB servo, hand/foot and dual hand.

Air conditioning option.

## Service and access

Easy access to all components.

Lockable engine bonnet and hinged rear grille for best-in-class ground level service access.

Grouped filters and services.

Single-arm design results in fewer grease points.

Removable under pan/plates increase service access.

## Wheels and tyres

Range of tyre options from standard pneumatic and extra-high flotation tyres for low ground bearing pressure.

Solids, foam filled and segmented for arduous hardstanding conditions.

8-wheel stud compatible with all major competitors.





## Engine/hydraulics

Class-leading high-flow performance.

44.7, 63 and 68kW gross engine power models.

Efficient proportional flow for maximum attachment efficiency and excellent control.

Protected and robust hoses and auxiliary routing.

Reliability and long service intervals.

## Loader arm

Low-level loader arm.

Robust endurance-tested steel structure.

Industry standard quickhitch.

Lifetime guarantee.

Excellent breakout forces.

## Transmission

Hydrostatic transmission giving zero to maximum speed forward and reverse.

Single speed motors with a maximum 11kph travel speed.

Fully protected drive motors.

Creep speed option for precise handling.

Power management system maximises tractive effort.

## Cab and controls

Excellent all-round visibility.

Gas strut assisted side access door.

ROPS and FOPS certified cab.

Intuitive servo controls.

Air conditioning option.

## Service and access

Easy access to all components.

Low bonnet line for excellent visibility.

Ground level service access.

Grouped filters and services.

Single-arm design results in fewer grease points.

## Tracks

Continuous rubber track for extra-high floatation and minimal ground damage.

High Drive track motor system.

Sealed-for-life bottom track rollers.

320mm and 450mm track options.

Easily accessible track grease tensioners.

## Incredible versatility

Thanks to an amazing array of genuine JCB attachments, from 6-in-1 shovels to patch planers, you have total flexibility to adapt Series II skid steers and compact track loaders to the job in hand. The industry-approved quickhitch system lets you switch between these attachments quickly and easily. And standard-flow or high-flow auxiliary hydraulic options expand the attachment options even further.

We even provide special kits, including heavy-duty bars, front-screen guards, level II FOPS guards and shatter-proof screens, so you can tailor your machine to more demanding applications, such as demolition projects.

All genuine JCB attachments are designed by JCB to complement your ultra-versatile JCB Series II skid steer or compact track loader. We use only the finest components combined with top quality engineering and exhaustive testing to ensure you receive only the very best attachments, perfectly matched to your machine.

From our genuine JCB shovels, in many sizes and styles, to our wide array of speciality hydraulic attachments, we have an attachment to meet diverse customer needs. In addition, all JCB attachments are backed up by a full JCB warranty for your complete peace of mind.

Whatever your business, there's a JCB attachment specifically designed to maximise the versatility and profitability of your machine.



### GENERAL PURPOSE SHOVEL

Designed for maximum performance and durability  
Drilled to accept toeplate or teeth  
Quickhitch compatible



### 6-IN-1 SHOVEL

The 6-in-1 shovel is equally efficient at digging, loading, dozing, grabbing, backfilling and grading  
Quickhitch compatible



### INDUSTRIAL GRAPPLE

Carry awkward or dangerous loads securely with the industrial grapple  
Powerful top grab and heavy-duty base ensure maximum versatility



### GROUND-PREPARATION RAKE

Hydraulically powered, versatile soil preparation tool for breaking up soil ready for seeding or turf  
Adjustable wheels set working depth  
Rake can be angled for windrowing



### SIDE-TIP SHOVELS

Allow filling or tipping to the side of the machine, meaning roadside trenches can be filled without the need for awkward, time-consuming manoeuvres  
Available in left and right configurations



### SILAGE GRAB

Highly effective for handling silage  
Twin rams for power, top mounted to resist damage  
Profiled top grab offers low maintenance





### FORKS

Convert the machine into an effective materials handler that offers excellent visibility when handling palletised loads  
Heavy-duty design maximises machine performance.  
Quickhitch compatible



### SWEeper COLLECTORS

Sweep in forward and reverse direction for added versatility  
Direct-drive brush motor means fewer components and reduced maintenance costs  
Optional pressurised water tank and sprinkler system for effective dust suppression



### HAMMERS

High power rates mean more work at greater speed  
Matched piston and tool diameter delivering maximum energy to the tool  
Constant blow energy is maintained irrespective of hydraulic oil flow



### TRENCHERS

Trenchers are specifically designed for effective operation in toughest digging conditions  
Removable spoil auger giving tidy and quick removal of soil  
Self-aligning boom and chain tensioning system helps improve boom life



### PATCH PLANERS

Quickhitch compatible for fast changeover between patch planer and other attachments  
Variable wheel configuration enables planing adjacent to the kerb or wall  
Variable cut-depth control allows the removal of a known volume of material



### BACKHOE UNIT

Transform your machine into an effective and powerful excavator with a backhoe attachment  
The backhoe attaches to the quickhitch mounting frame and is arranged so that the control levers are conveniently positioned for operation from within the cab  
Choice of bucket widths available



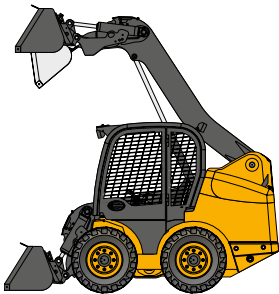
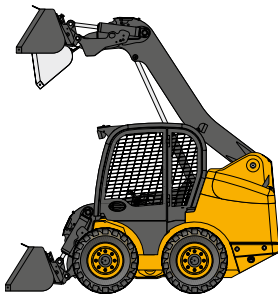
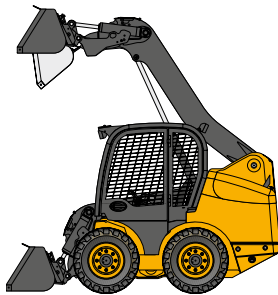
### EARTHDRILLS

Designed to match carrier machine's hydraulic pressure requirements for maximum efficiency  
50mm hex drive output system enables quick and easy changes of the auger  
Comprehensive range of augers from rock to heavy-duty and standard-duty



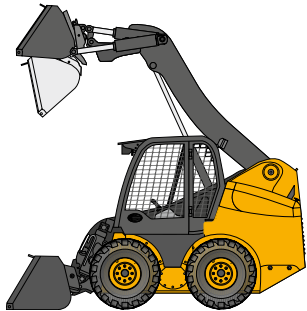
### STUMP GRINDER

For environmentally friendly, safe and efficient removal of tree stumps  
Full control from the cab, with wide sweep and 255mm below ground capability  
Tough construction with replaceable cutting teeth

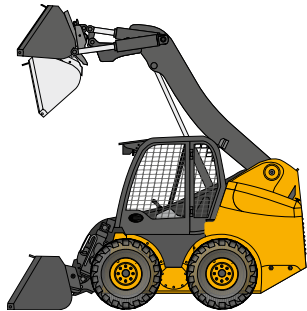
		160	170	180
				
Operating capacity	kg	630	720	820
Operating weight	kg	2650	2715	2740
Tipping load	kg	1260	1440	1640
Overall width	mm	1370	1520	1600
Standard bucket capacity	cu. m	0.29	0.36	0.45
Overall height	mm	1930	1940	1940
Gross engine power	kW	37.5	37.5	44.7
Loader breakout	kgf	1442	1488	1505
Pump flow (Hi-Flow)	l/min	68 (n/a)	68 (124)	68 (124)
Travel speed (2 speed)	kph	11	11	11



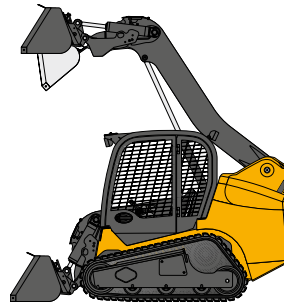
190



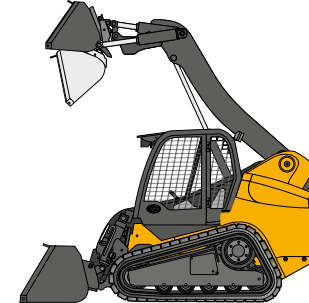
1110



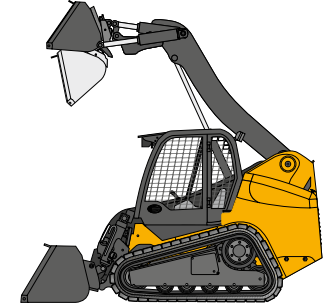
180T



190T



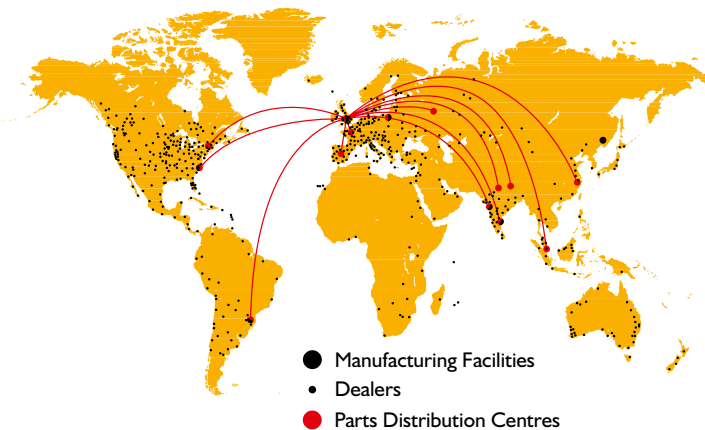
1110T



950	1150	860	950	1150
3710	3820	3680	4650	4960
1900	2300	2457	2714	3285
1691	1691	1676	1830	1960
0.50	0.52	0.45	0.60	0.60
2014	2014	1933	2029	2029
63	68.6	44.7	63	68.6
2200	2200	1505	2750	2750
80 (133)	80 (133)	68 (124)	80 (133)	80 (133)
11 (18)	11 (18)	11	10	10

## A few words about JCB

A groundbreaking, class-leading family business with a commitment to supporting our customers and protecting the environment



**A family company on a global scale.** JCB is no ordinary company. From the dreams of one man, Joseph Cyril Bamford, we have grown into the world's largest privately owned construction company by volume. Since 1945, the same attention to detail, passion for progress and family spirit has taken us from strength to strength.

Nowadays JCB operates across all five continents, manufacturing at 17 factories in the UK, Brazil, Germany, China, North America and India. With 1,500 dealerships and depots selling and supporting our products in over 150 countries, we are one of the top three manufacturers of construction equipment with some of the finest engineering facilities in the world.

**A history of world-class innovation.** Our business has always been driven by innovation, using only the most advanced technology, components and processes, meticulous design and rigorous testing. Evidence of this doesn't come much more powerful than our revolutionary JCB Dieselmex engine. Having grabbed the headlines when it smashed the world diesel land-speed record at 350.092mph, it is now providing our customers with tomorrow's performance today.



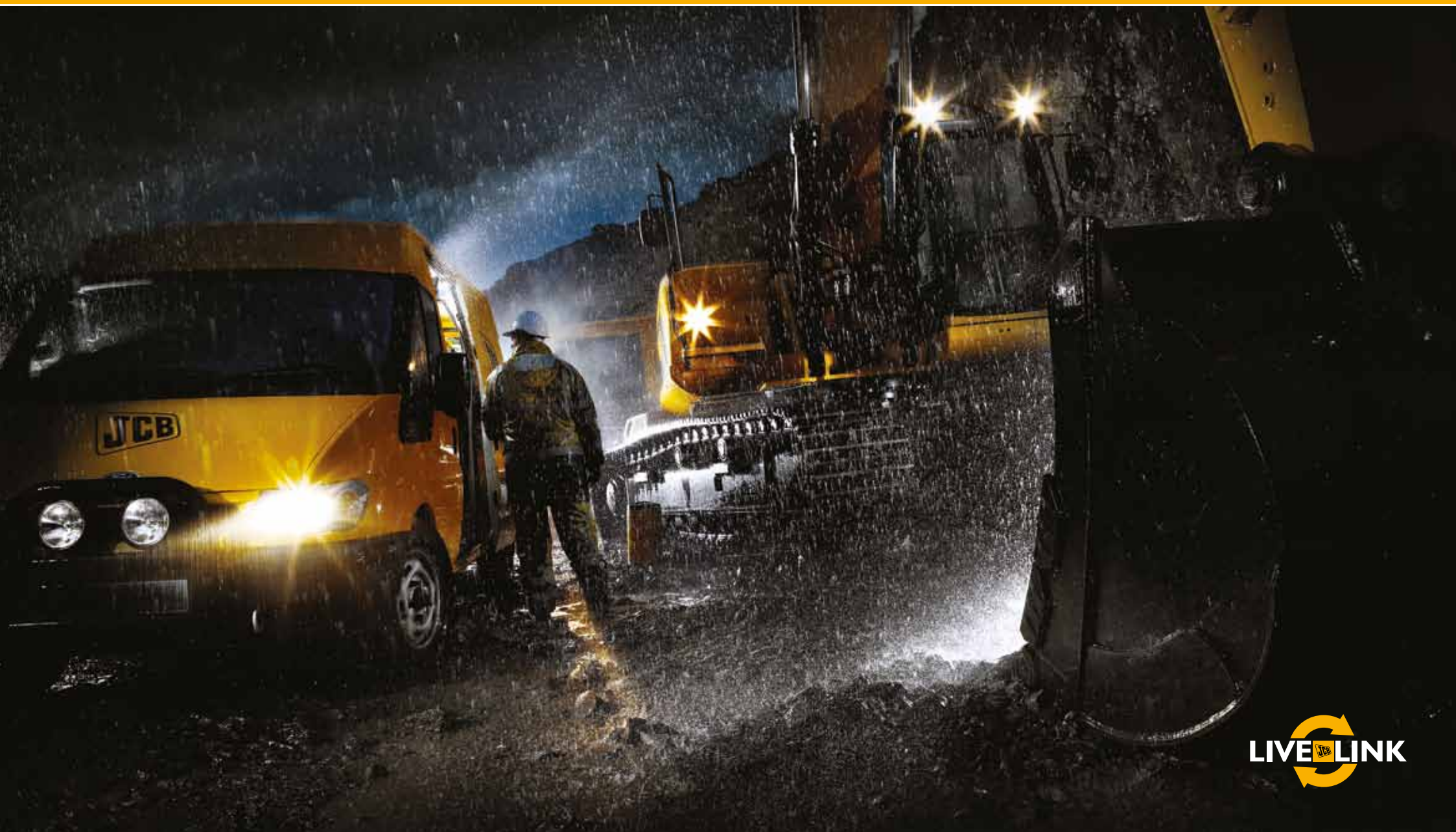
**Sustainability in all we do.** As a manufacturer of working machinery, operating in both established and emerging markets, we accept the challenge of helping to deliver economic and environmental sustainability.

Product innovations that provide the right solutions to our customers have been a vital part of our history and will be key to our sustainable future. But in addition to developing cleaner and more efficient machines, we have a commitment to ensuring our manufacturing facilities meet the highest environmental standards.

**A commitment to our customers that goes on and on.** That's a fact we remind ourselves of constantly, and it's the reason our customers are at the heart of everything we do. Whatever a customer needs, we make it our mission to provide world-class support and 100% satisfaction.

At the heart of this is a dedication to minimising machine downtime. So our state-of-the-art World Parts Centre dispatches more than a million genuine parts and attachments every week, with an 'Anywhere in 24 hours' strategy. Our JCB-trained technicians provide excellent, expert customer care, whether it's routine servicing or something more urgent. And we are constantly looking at new, innovative ways to help you get the most out of your machine.







JCB Sales Limited, Rocester, Staffordshire, United Kingdom ST14 5JP. Tel: +44 (0)1889 590312 Email: [salesinfo@jcb.com](mailto:salesinfo@jcb.com)

Download the very latest information on this product range at: [www.jcb.com](http://www.jcb.com)

©2009 JCB Sales. All rights reserved. No part of this publication may be reproduced, stored in a retrieval system, or transmitted in any form or by any other means, electronic, mechanical, photocopying or otherwise, without prior permission from JCB Sales.  
JCB reserves the right to change specifications without notice. Illustrations and specifications shown may include optional equipment and accessories. The JCB logo is a registered trademark of J C Bamford Excavators Ltd.

