

AGRICULTURE



A Product of Hard Work



More productive all around the farm



Since Joseph Cyril Bamford first built a farm trailer back in 1945, we've worked hard to develop a comprehensive range of agricultural machines that deliver the greatest levels of performance for maximum profitability. Today, we are proud to say that we are specialists in agricultural productivity. That's why you'll find that when it comes to investing in research, development and state-of-the-art manufacturing, no-one comes close to JCB.

This JCB agricultural range proves our commitment to constant innovation. In 1977 we started building specialist agricultural Loadall models. Today we are the world number one in telescopic handlers, setting the benchmark by which all others are judged. The latest range, with all but the smallest models featuring the record-breaking JCB Dieselmix engine, achieves new levels of excellence.

1983 saw the introduction of our agricultural wheeled loaders. Not content with offering industrial machines with different names, we developed an entire range purposely designed for high performance in the most demanding agricultural applications. Now this range is bigger than ever to give you the ideal solution.

1991 saw a revolution in tractor design. The JCB Fastrac brought you the world's first fully suspended, high-draught tractor capable of 50mph (80kph) on the road. Everything about this machine is designed to increase your productivity, giving you a truly versatile machine that you'll use all year round.

The JCB skid steer, launched in 1993, created another industry first; a skid steer loader to offer the safety and convenience of side access. This was followed by compact agricultural Loadalls in 1995, bringing Loadall versatility to confined areas, and the Teletruk in 1997; another revolutionary concept that saves time and money.

But we are 'Jamais Content' (never content). We're constantly developing new solutions that meet your needs, both now and for the future.





CONTENTS

8250 FASTRAC 4 – 5

7000 SERIES FASTRAC 6 – 7

2000 & 3000 SERIES FASTRAC 8 – 9

AGRI WHEELED LOADERS 10 – 11

AGRI TELESCOPIC HANDLERS 12 – 13

MID RANGE AGRI TELESCOPIC HANDLER 14 – 15

COMPACT AGRI TELESCOPIC HANDLERS 16 – 17

COMPACT HANDLING EXPERTISE 18 – 19

GROUNDHOGS 20 – 21

GENERATORS 22 – 23

A FEW WORDS ABOUT JCB 24 – 25

8250 Fastrac

8.3-litre, high-torque Cummins engine delivers on demand

JCB V-Tronic transmission increases operational potential

Front and rear suspension improves comfort,
increases traction and eliminates power-hop

Road speed of up to 43mph (69kph)* decreases travel
time between fields, so you can do more

ABS braking gives you safe, controlled stopping power



When we created the 260hp, 8.3-litre-engine JCB 8250 Fastrac, we created something unique. First, at the very heart of the 8250, is the V-Tronic continuously variable transmission (CVT). This increases operational potential in the field by giving you: uninterrupted acceleration and deceleration; a number of different operating modes; and easier direction changes for simpler operation and handling.

Second, because this machine can travel up to 43mph (69kph)*, you need to know you've got stopping power as well as excellent directional stability and control, particularly in wet conditions. That's what you get from our twin caliper EU truck-standard braking system, with ABS as standard.* In fact, JCB is still the only manufacturer to produce a high-draught agricultural tractor that can be legally classed as a high-speed tractor.

Now, let's talk full chassis design and front and rear suspension, which means two things: traction and comfort. The full suspension system is designed to deliver consistent ground force from the tyres, maximising traction and minimising compaction. The tyres themselves are slightly unequal, optimising performance whilst maintaining near 50/50 weight distribution and a true 4WD system (with an excellent turning circle).

Front and rear progressive suspension, together with anti-roll bars, also means that the 8250 safely and comfortably handles road travel. And in the field, it smoothes out rough conditions so you can work faster, longer and more comfortably, maximising your productivity and earning potential.

Finally, add the finest cab in the industry; a superb, spacious environment with an amazing array of essentials and luxuries including full-size passenger seat, excellent ventilation and climate control, a refrigerator and lots of extra features such as an advanced touchscreen and headland management.

** Territory dependent*





7000 Series Fastrac

4 engine options from 173-260hp (129-194kW)
and 4-range, 6-speed transmission

Up to 70kph (43mph)* travel speed and 4-wheel
ABS braking equal fast, safe roading

Larger rear tyres result in maximum
traction and weight distribution

Self-levelling front and rear suspension on an
all-new chassis give superb ride comfort

Rear-biased, industry-leading cab offers
more space and first-class visibility



The 7170, 7200, 7230 and 7270 take the Fastrac concept to new heights, setting incredible standards in comfort, control and performance.

These models are powered by fuel-efficient 6.7-litre Cummins 6-cylinder engines with rated outputs spanning 173hp to 260hp (129kW to 194kW), and like the range-leading 8250 they use larger rear wheels to generate maximum tractive effort in the field.

The P-TRONIC transmission on all three machines is an all-new design, engineered and built by JCB. It's a 4-range, 6-powershift transmission that gives you 24 forward speeds and 9 reverse with smooth, fingertip-controlled direction changes. Different operating modes are selected using the touch-screen monitor with manual shifts made via the seat-mounted joystick.

Auto-shifting triggered by changing engine load makes life easier for the operator who can concentrate on steering and implement performance.

Ride comfort on these machines is second to none. In addition to the innovative self-levelling rear suspension, which maintains a set ride height regardless of load, there is a similar system for the front axle. An all-new chassis supports this advanced suspension set up, along with the new rear axle and 9100kg rear and optional 3500kg front implement linkage system.

Moving inside, to the industry's finest cab, you'll find a superb environment that we're confident will become the benchmark for driver comfort and – thanks to a unique full-size seat installed alongside the luxury air-suspended driver's seat – passenger comfort. A light airy environment with excellent all-round visibility, super-efficient ventilation and climate control, easy-to-use, ergonomic controls including an advanced touchscreen, headland management and lots of extras like a refrigerator, heated seat and heated mirrors and windows, add to the luxury.

** Territory dependent*





3000 Series Fastrac

Two machines from 190-220hp (141-164kW)

Full chassis design with front, rear and rear deck mounting points

Power units are fuel efficient and reliable

P-TRONIC transmission gives smooth, fingertip control

Xtra-Drive results in an effortless driving experience



The JCB Fastrac is the only draught tractor with a full suspension system, making our 3000 Series Xtra machines much quicker and more manoeuvrable field operators and saving you valuable time. They also offer a smoother ride which makes life more comfortable for the operator, enabling increased work rates and reduced shockloads on implements.

But the Fastrac doesn't just finish the task in record time. With a road speed of up to 50mph (80kph),* it also gets you to the next job more quickly when the pressure's really on. And, thanks to truck-standard, controlled, fade-free braking, you can be completely confident in your own safety when you're out there on the road.

At the heart of every Fastrac is power. Powerful 6-cylinder engines combined with the P-TRONIC transmission and high-specification, load-sensing hydraulics are designed to give you all the performance and torque you need as well as good economy and reliability, with low emissions. In addition, Xtra-Drive allows the Fastrac to behave like an automatic car; simply pressing the brake pedal gives effortless start-stop clutch control.

Inside the Fastrac cab you'll find the ultimate in luxury: two full-size seats and air conditioning as standard; sophisticated, fingertip, armrest-mounted controls positioned for maximum convenience; extensive visibility; noise levels as low as 72dBA; and the full colour touchscreen for effortless control and set up of tractor functions. No other cab helps minimise fatigue so effectively.

** Territory dependent*





2000 Series Fastrac

Efficiency and low emissions

Quadronics steering equals ultimate manoeuvrability

Three mounting points give flexibility and versatility

Smoothshift transmissions make for dependable,
low-effort clutch operation

3-speed powershift incorporating JCB Autoshift gives you
the power and torque you need



For the ultimate in manoeuvrability and flexibility, it has to be the 2155 and 2170 Fastracs. These machines feature an equal-wheel design which gives 50/50 weight distribution for optimum traction in the field. Couple this with a full chassis, all-round suspension and a mid-mounted cab, and you have the most comfortable and versatile machine on the market.

The mid-mounted cab on a full chassis enhances versatility even further via up to three mounting points, making these Fastracs as comfortable on a plough as they are with a demount sprayer. And no matter what the application, thanks to JCB's Quadronic 4-wheel steering system and five different steering modes, you'll find the 2000 Series Fastrac a supremely manoeuvrable machine.

Under the bonnet, the 6-cylinder engine offers plenty of power and torque in both the 160hp and 170hp variants. Meanwhile, the JCB Smoothshift selectronic transmission allows you to find the perfect gear for any application from the 54 available forward gears. These give the perfect combination for rapid job-to job transfers with a top speed of 60kph.

With such high travel speeds, safe and efficient braking is crucial. The Fastrac system is the best in the industry, with external disc brakes on each wheel ensuring fade-free braking and preventing drive-line contamination. In addition, the Fastrac ABS* system adapted from trucks, gives controlled, stable braking on the road and in the field.

Finally, in the cab, as with all Fastracs, the 2000 Series offers a full-size passenger seat and all controls are conveniently placed within easy reach. The PLUS package enhances in-cab comfort further with electronic spools, deluxe seating and larger mirrors.

Overall, the 2000 Series is an enviable combination of high-speed versatility and manoeuvrability, with unbeatable ride comfort.

* Territory dependent





Agri Wheeled Loaders

AGRI WHEELED LOADERS

Compact hydrostatic models are simple to use and maintain with easy access to confined spaces

4 Agri 'S' models offer excellent power-to-weight ratio for fast silage clamp operation

5 Agri with 4-speed transmissions give high-output handling in grain and fertiliser stores

ARTICULATED TM DESIGN

Four telescopic loading shovels with articulated steering for manoeuvrability and spot loading precision, with benefit of additional lift height from a telescopic boom



JCB Farm Master Agri wheeled loading shovels have the power, specification and features to provide optimum performance and output in the most demanding agricultural applications.

First, there are the 403, 406 and 409 Agri; compact performers that are quick and manoeuvrable around the yard and in and out of farm buildings, giving you incredible versatility for general loading tasks.

Then there's the 'S' Agri range. Four models Designed specifically for loading and handling on gradients or in soft, slippery conditions, these machines feature powerful engines – from 130-230hp (97-171kW) – for lively performance and excellent torque and efficiency.

And finally, we have the 411 Agri, the 416 Agri, the 426 Agri and two heavyweights, the 436 Agri and the mighty 456 Agri with a lift capacity of almost 12 tonnes. In contrast to the 'S' Agri models with engines tuned to give high power-to-weight ratios and 6-speed transmissions, these Agri models are equipped with four-speed transmissions and are intended for high-output handling in commercial grain and fertiliser stores.

In addition, we also now offer four articulated wheeled loaders with telescopic booms. The new TM170 Agri and TM220 Agri are incredibly versatile thanks to their compact dimensions and additional lift height provided by the telescopic boom. This is combined with an in-built side-shift function that provides easy, spot loading precision.

Meanwhile the TM310 Agri and TM310S Agri make light work of tough pushing and loading tasks, whether working at ground level or height. Both feature the Variflo hydraulic system which uses flow-on-demand variable output to provide maximum flow to 140 litres/min, while proportional control of auxiliary services gives finer control when operating attachments such as muck grabs. We have also installed the record-breaking JCB Dieselmix four-cylinder turbo engine, an electronically controlled common rail unit that provides 130/145hp (97/108kW), with a maximum torque up to 550Nm.





Agri Telescopic Handlers

Complete JCB driveline equals outstanding performance

100hp/130hp JCB Dieselmix engines provide massive low-end torque for increased productivity

Low fuel consumption means more work for less

Best-in-class comfort increases operator productivity

TorqueLock (Agri Super/Agri Xtra) optimises travel performance



Stylish design, outstanding quality, plus an amazing list of standard equipment, equals superb value for money. It all adds up to the 536-60, 531-70, 536-70, 541-70 and 535-95 Agri Loadalls. With a side-mounted engine and low boom mounting, these machines offer fantastic all-round visibility and superb stability with a load at height.

So whether you are bulk loading crops or manure, operating on the silage clamp, or stacking bales or boxes, these JCB side-engine machines give you the power and speed, plus the precision and control required to work quickly, efficiently and safely.

The 536-60 offers 3.6-tonne capacity and a maximum lift height of 6.2 metres. The 531-70, 536-70 and 541-70 provide a 7-metre lift height combined with 3.1-tonne, 3.6-tonne and 4.1-tonne capacities, while the 535-95 has a 3-stage boom, giving 9.5-metre maximum lift height and 3.5-tonne capacity ideal for large-scale bale handling.

Four levels of specification are available: Agri, Agri Plus, Agri Super and Agri Xtra.* Agri models are fitted with a 4.4-litre, four-cylinder turbocharged JCB Dieselmix engine producing 100hp (74.2kW) and four-speed transmission. Agri Plus, Agri Super and Agri Xtra models feature a 4.4-litre turbocharged JCB Dieselmix unit developing 130hp (97kW), the Plus specification also having the four-speed transmission.

The Agri Super and Agri Xtra are designed for maximum productivity in all applications. The 130hp engine drives through a six-speed transmission with TorqueLock giving a maximum speed of 25mph (40kph) for superb roading and towing performance. The Agri Xtra models feature the new seat-mounted servo package for the ultimate in precision and productivity.

** Model specific*





Mid-range Agri Telescopic Handler

Proven versatile design gives high capacity at full reach

JCB chassis and boom ensure a long reliable service life

Compact dimensions enable operation in smaller buildings

Powerful engines and low weight provide nimble performance

Clear service access to engine gives easy maintenance



The 527-58 is our most compact side-engined Loadall – just 2m wide and 2m tall to the top of the cab, but still with a more-than-capable 2.7-tonne lift capacity with a maximum lift height of 5.8m. Even at full 3m forward reach the machine is capable of handling a 1.25-tonne load.

With a 100hp (74.2kW) JCB Dieselmix engine, plus single-lever servo controls and a highly efficient hydrostatic transmission with infinite speed control, the machine is capable of up to 40km/h.* In addition, the optional varispeed control allows independent control of ground speed and hydraulic flow to attachments such as sweepers, while the hydraulics deliver up to 126 litres/min of flow for high productivity

The 526-56 Agri features a turbocharged 100hp (74.2kW) JCB Dieselmix 4-cylinder engine as standard, while the Agri Plus model is equipped with a 114hp (85kW) engine. These powerful engines, together with low overall weight, produce extremely agile machines, with rapid take-up of power courtesy of a torque converter and 4-speed synchro or optional powershift transmission.

The 526-56 can be fitted with 20" or 24" wheels. The larger tyres offer greater ground clearance, floatation and traction, ideal for working on the silage clamp and other off-road applications.

A full range of factory fitted options are available to specify machine to applications. A limited slip differential* on the front axle ensures traction in all conditions while a single-lever joystick ensures smooth loader control for fast machine operation. An 8-tonne capacity hydraulic pick-up hitch with auxiliary spool and trailer electrics add to machine versatility.

You'll also find that despite their compact size, both machines feature an extremely spacious cab. With a high-specification, fully adjustable seat and stylish, ergonomic layout, they are designed to maximise productivity and minimise operator fatigue.

** Optional*





Compact Agri Telescopic Handlers

Compact dimensions and outstanding manoeuvrability
enable fast operation in restricted areas

Central cab position and low offset boom
give outstanding all-round vision

Telescopic lift and reach provide genuine
lorry loading capability

4-cylinder engine offers lively performance
and high power-to-weight ratio

Hydrostatic transmission equals 'big' pushing
power and excellent controllability



JCB's ultra-compact 515-40 Loadall offers a 1.5-tonne lift capacity with 4m loading height and more than 2.5m of forward reach. The machine weighs just under 3.5 tonnes and, thanks to an innovative chassis design, boasts a cab height of only 1.8m. With four-wheel steer and a wheelbase of just 1.75m, the machine has a turning radius at the outer edge of the tyres of 2.8m.

Also bringing Loadall performance to previously inaccessible agricultural yards and buildings is the JCB 520-40. 2-tonne capacity, to a maximum height of 4m, from a machine less than 2m in height and 1.6m wide, make it a more versatile, comfortable and stable alternative to a skid steer loader.

The 524-50 and 527-55 offer increased lift capacity and lift height but still within small dimensions, 2m wide and 2.1m high. Mounting the cab centrally at the front of the machine affords the operator an unparalleled view of the carriage, both at ground level and through the lifting cycle to full height and reach. The low, offset boom provides excellent vision to the right-hand side, particularly to the rear corner.

The cab itself offers clear step-in access, ideal for operation on a livestock farm. All controls fall easily to hand; including single lever command of lift and crowd functions, plus separate levers for extend-retract and auxiliary functions.

The 520-40 is fitted with a 2.2-litre diesel engine producing 50hp (37kW), and the 524-50 and 527-55 are fitted with 4.4-litre JCB Dieselmix engines providing 85hp (63kW). The engine drives through a 2-range hydrostatic transmission for simple operation and ease of handling in the most restricted spaces. Hydrostatic drive provides excellent pushing power, particularly at low speeds, as well as the ability to operate the machine using only the accelerator, ensuring smooth acceleration and deceleration, and precise control in confined areas.

Finally, the 520-50 with a 2-tonne lift capacity and a 5 metre reach is the only compact loadall featuring a torque convertor transmission linked to a 61.5kW engine.





Compact handling expertise

8 skid steers and compact tracked loaders from 600kg to 1100kg rated capacity

Unique side-arm design provides easier and safer access

3 tracked versions give increased traction and stability when the going gets tough

3 Teletruk Agri range from 3- to 3.5-tonne capacities

Unique telescopic boom allows forward reach, saving time, space and money

403 wheeled loader is a fast performer that can access restricted sheds



Following extensive market investigation that identified the key risk associated with typical skid steer loader design was operator safety, the JCB skid steer was the first to offer the safety and convenience of side access.

The smallest model in the range, with a rated operating capacity of 600kg, is the 160. Its short wheelbase and compact, narrow, low design give excellent manoeuvrability in confined buildings. The skid steer 170, 180 and 190 feature 700kg, 800kg and 900kg operating capacities along with increased stability, while the largest wheeled machine, the 1110, is fitted with a turbocharged JCB Dieselmex engine (like the 190) for greater operating capacity.

Three compact track loaders complete the line-up; the 180T, 190T and 1110T. These offer high operating capacity and excellent lateral stability, traction and low ground bearing pressure for working in soft ground conditions.

JCB Teletruk Agri are unique counterbalanced forklifts combining the advantages of a telescopic boom with small size and excellent manoeuvrability. For the first time, these machines bring the carriage rotation common on larger telescopic handlers to small, counterbalanced fork lift trucks. So whether you are moving palletised loads or bulk materials with a bucket, it's easier, faster and safer with a Teletruk. The three-model range comprises: the two-wheel-drive TLT 30D Agri High Lift lifts 3 tonnes to 5.15 metres; the two-wheel-drive TLT35D Agri lifts 3.5 tonnes to 4.4 metres; and the four-wheel-drive TLT35D 4x4 Agri lifts 3.5 tonnes to 3.5 metres, or 2.75 tonnes to full height 4.35 metres.

Finally, the JCB 403 wheeled loading shovel is compact, manoeuvrable and extremely useful with a lively engine for fast performance and a maximum speed of 15kph (9mph). The 0.3-cubic-metre shovel and 2180mm (7ft 2in) dump height shift loads in no time, while the 403's ability to nip in and out of restricted poultry and livestock sheds makes it indispensable. Plus the 403 is reliable, durable, economical to run and requires very little maintenance.





Groundhogs

Powerful diesel engine delivers impressive torque for difficult ground conditions

Automotive layout with optional cab provide comfort and ease of operation

500kg (1102lb) steel tipping cargo box (hydraulic optional) gives high capacity

Road legal specification lets you travel between job sites with no need for an additional vehicle or trailer

A choice of tyres lets you specify machines for the road, fine turf or rough/steep conditions



JCB Groundhogs are go-anywhere utility vehicles with a huge range of potential applications in estate management, game keeping, equestrian centres, forestry and agriculture.

No matter what area you specialise in, these machines enable you to transport equipment, materials, livestock and people over fine turf or rough terrain.

Both the 4x4 and the 6x4 model boast superb build quality and high-torque, powerful diesel engines for a robust machine you can rely on to keep performing. Both also feature high payloads, with the ability to carry a driver, passenger, a 500kg (1102lbs) load and tow 500kg at the same time. Plus they are easy to get from site to site, either on the road with travel speeds of up to 50kph (31mph - 4x4) and 29kph (18mph - 6x4), or on the back of a trailer.

The 6x4, especially when equipped with turf tyres, is the best choice for surfaces that you don't want to damage. The new 4x4 model is the machine to get you out of trouble on muddy, slippery surfaces or steep inclines, thanks to a more powerful 19.5kW (26hp) engine, increased torque, fully independent suspension at each wheel, high ground clearance and selectable four-wheel drive. The 4x4 is the machine that can get you into, and out of, the toughest ground conditions.

Both machines also offer a huge range of options – from cabs, electric winches and road legal kits, to a choice of yellow or green – to tailor your Groundhog to your specific needs. It all makes these machines the tough, versatile and reliable choice for productive performance.





Generators

Superior reliability and quality

World-class engine, alternators and major components

Extensive and rigorous testing and development

JCB Assetcare package available across the entire range of generators

Comprehensive package of support that really is second to none



When we developed our new range of generators, we benefited from a 'clean sheet of paper' design which meant we could take the best from the rest, combined with all the latest technological advances, to create the perfect products.

All suitable for prime or stand-by applications, the complete range covers 18 power nodes ranging from 15 to 550kVA, available as single or three phase. As well as offering open and sound-attenuated versions, we also offer eight models that have been tailored to the rental market.

Generators can be made to order so you can specify exactly the specification you need. For sizes up to 3000kVA bespoke builds are possible as either open or containerised units. All power nodes are available as 50Hz or 60Hz* in any configuration.

As you would expect from a company with a world-class reputation, the build quality of all our generators is superb, with each boasting the highest quality components. And, as each generator is made to order, you can specify the exact connections you need.

When it comes to the diesel engines and alternators at the heart of these products, we have also identified the best performers for each generator size. So you'll find that the smallest generators use Deutz diesel engines, followed by JCB Dieselmex engines, Sisu and Scania in our larger models. All coupled to a Newage alternator fitted across all models.

But the benefits don't stop there. A digital control panel as standard on all models lets you programme the system to meet your own requirements in terms of engine monitoring and power frequency, whilst remote monitoring is available as an option through GPS technology, allowing you to protect your investment wherever it may be.

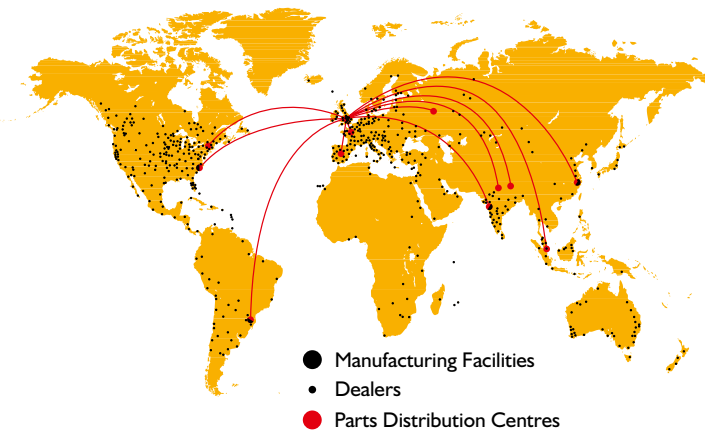
** Not UL approved*





A few words about JCB

A groundbreaking, class-leading family business with a commitment to supporting our customers and protecting the environment



A family company on a global scale. JCB is no ordinary company. From the dreams of one man, Joseph Cyril Bamford, and our beginnings in agricultural machinery, we have grown into a major world brand. Since 1945, the same attention to detail, passion for progress and family spirit has taken us from strength to strength.

Nowadays JCB operates across all five continents, manufacturing at 17 factories in the UK, Brazil, Germany, China, North America and India. With 1,500 dealerships and depots selling and supporting our products in over 150 countries, we produce some of the most innovative and popular farm machinery, including the Fastrac and Loadall, at some of the finest engineering facilities in the world.

A history of world-class innovation. Our business has always been driven by innovation, using only the most advanced technology, components and processes, meticulous design and rigorous testing. Evidence of this doesn't come much more powerful than our revolutionary JCB Dieselmix engine. Having grabbed the headlines when it smashed the world diesel land-speed record at 350.092mph, it is now providing our customers with tomorrow's performance today.

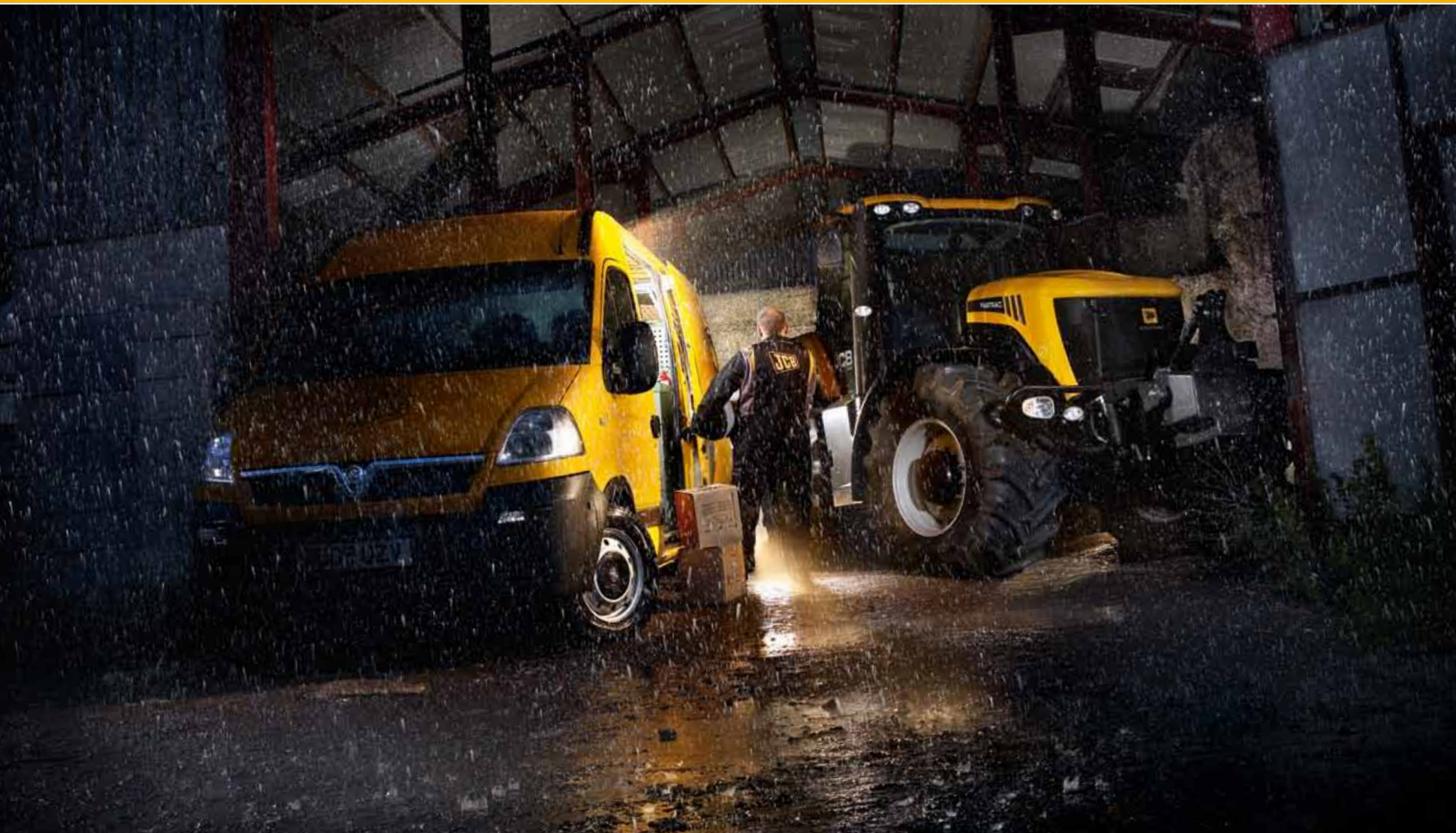


Sustainability in all we do. As a manufacturer of working machinery, operating in both established and emerging markets, we accept the challenge of helping to deliver economic and environmental sustainability.

Product innovations that provide the right solutions to our customers have been a vital part of our history and will be key to our sustainable future. But in addition to developing cleaner and more efficient machines, we have a commitment to ensuring our manufacturing facilities meet the highest environmental standards.

A commitment to our customers that goes on and on. That's a fact we remind ourselves of constantly, and it's the reason our customers are at the heart of everything we do. Whatever a customer needs, we make it our mission to provide world-class support and 100% satisfaction.

At the heart of this is a dedication to minimising machine downtime. So our state-of-the-art World Parts Centre dispatches more than a million genuine parts and attachments every week, with an 'Anywhere in 24 hours' strategy. Our JCB-trained technicians provide excellent, expert customer care, whether it's routine servicing or something more urgent. And we are constantly looking at new, innovative ways to help you get the most out of your machine.





JCB Sales Limited, Rocester, Staffordshire, United Kingdom ST14 5JP. Tel: +44 (0)1889 590312 Email: salesinfo@jcb.com

Download the very latest information on this product range at: www.jcb.com

©2009 JCB Sales. All rights reserved. No part of this publication may be reproduced, stored in a retrieval system, or transmitted in any form or by any other means, electronic, mechanical, photocopying or otherwise, without prior permission from JCB Sales. JCB reserves the right to change specifications without notice. Illustrations and specifications shown may include optional equipment and accessories. The JCB logo is a registered trademark of J C Bamford Excavators Ltd.